

Logistics and Scaffolding

A Combined Service Model

An Introduction to Alandale Logistics



Alandale Logistics was formed in 1996 to provide 'Support Services' to the construction industry, and since then has been involved with some of the largest and most complex projects in the UK.

Logistics (in construction terms) provides solutions & support services in several differing areas of the construction process; from the planning & pre-construction phases of a project through to on site implementation and ultimately completion.

The philosophy of our logistical service is early engagement to assist in the planning process and to provide practical / pragmatic solutions for a construction project - to not only allow it to progress safely and efficiently, but also cost effectively.

Whilst our Logistics Team provides this support service to the project, the client can then focus upon the construction and programme methodology of the project.

By using our past experiences and gained knowledge of practical logistics management techniques, we assist in providing the best possible solutions and management systems for each particular project we are involved with.

Key Services:

- ▲ Logistical and Traffic Management Planning
- ▲ Contractor Management Tools
- ▲ Security Management and Access Control
- ▲ Web-Based Delivery Management
- ▲ Materials Handling
- ▲ CITB Traffic Management
- ▲ Lump Sum Waste Management

An Introduction to Alandale Scaffolding



Alandale Scaffolding was formed with the intention of providing a Professional Scaffold planning and support service. Our planning and design facility offers our clients a complete service from conception to installation, ensuring every aspect of their requirements are met.

This, in conjunction with our ongoing project support and advice, combined with our bespoke products and attention to detail, differs us from similar companies and services, ensuring that the highest possible standards are attained on every project that we are responsible for.

Alandale Scaffold take pride in approaching each project individually, ensuring that the attention to detail required for the key elements are instilled into every particular aspect of the required works.

Integrating our Technical, Safety and Logistical knowledge into the planning of the works provides our clients with a complete picture of how the works will be successfully implemented.

This combination of specialist knowledge of Scaffolding Services with our Logistical Management solutions offers a completely new and innovative product to our clients, which not only reduces cost and risk, but also provides a complete solution from the pre-planning and erection through to the subsequent decommissioning.

Key Services:

- ▲ Full Planning and Feasibility Support
- ▲ Comprehensive Design and Drawing Service
- ▲ Professional Installation Teams
- ▲ Bespoke Scaffold Solutions
- ▲ Both Traditional and System Scaffold Products
- ▲ Complete Consultancy Service

The Combined Scaffold/Logistical Service Model



The combination of Logistics and Scaffolding services provides our clients with a unique model that will not only offer a synergy from the service overall, but will also provide commercial savings and a multi-tasked / multi-disciplined team and improved Health and Safety standards from a dedicated and Full time Handrail / Forklift / Banksman Operative.

By identifying that Scaffolding and Logistics are two of the largest aspects of any projects preliminary costs, and that they are also the key services that are involved from the commencement to the end of a project, highlights the fact that there is the opportunity to provide our clients with a unique cost-saving model for the lifespan of the project.

The Management of Alandale Scaffolding and Alandale Logistics have been fortunate enough to be involved with some of the largest and highest profile projects in the UK and in this time have gained a wealth of major project experience over many years.

These Scaffold and Logistical services (and gained experience) have therefore been combined to produce a model that offers a unique offering to our clients that not only enhances the Health and Safety service overall, but also offers cost-savings.

The combination of our Scaffold and Logistics Management services provides the option for us to identify (project specifically) the key roles that may offer multi-skill / multi-task capabilities of our key scaffold and logistics positions, which will then in turn reduce the overall number of resources actually needed to deliver the same amount of services.

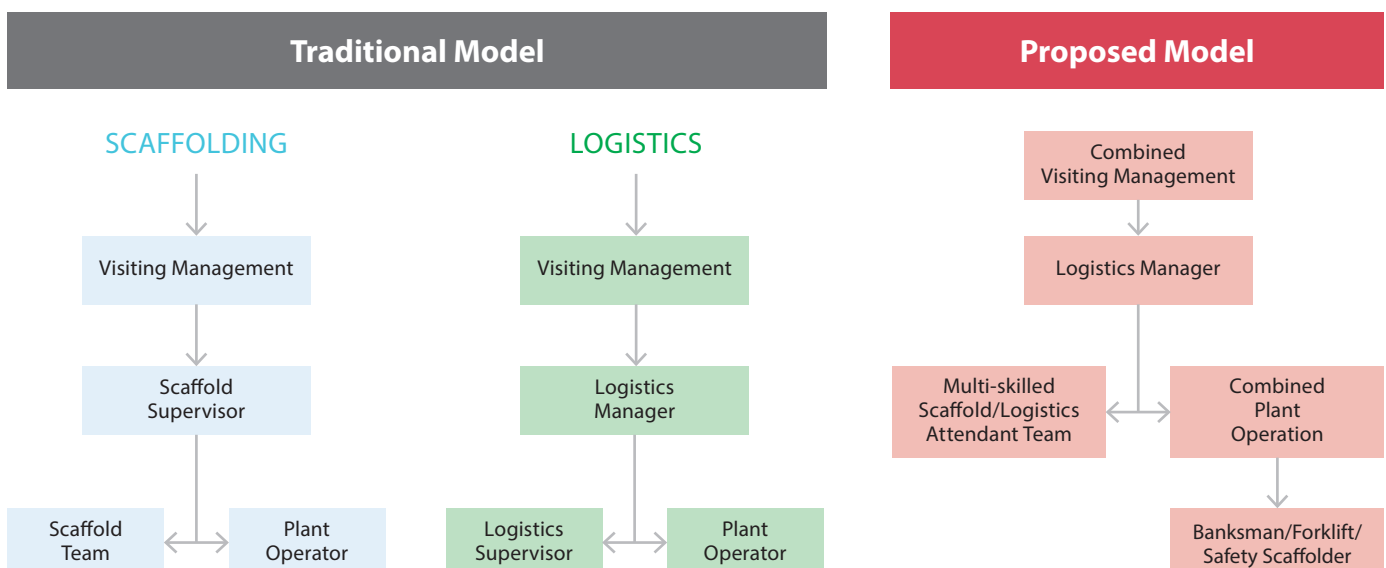
This model also provides the Client with a dynamic and flexible service, offering a pro-active approach to the ongoing support to a project's needs by providing a full time banksman and scaffolder - improving the overall standard of service and improving continuity.

The Combined Scaffold/Logistical Service Model



Key Points of our Proposed Model

- ▲ Inclusion of our Logistical Management Planning Services
- ▲ Provision of our 'Contractor Management' Tools
- ▲ Integration of our Scaffold and Logistics Resource – reducing cost and adding value
- ▲ A dedicated on-site 'attendance' / 'multi-service' team
- ▲ Our multi-skilled operatives can then attend to several differing disciplines / Relief positions
- ▲ Combined Banksman / Forklift / Safety Scaffolder



Example Cost Model

Provided in the table below are some example items that are generally provided within separate packages.

Our Example Cost Model is intended to provide working examples where our combined service model will not only add value, but will provide savings to the client on the procurement of individual packages.

Variation	Labour	Plant Hire
Erect Handrail	Included	Cost
Erect Tower	Included	Cost
Cover Openings / Leading Edges	Included	Cost
Provide Banksman	Included	Health and Safety
Continuity of Banksman	Included	Health and Safety
Note: This Cost Model allows savings recovery from Sub-Contractors		

Logistics and Scaffold Project Portfolio

Kings Cross Development

Package: Logistics and Waste Management

Project Overview: The Eastern Goods Yard Redevelopment is one of the largest projects underway in Central London.

The project involves the extension and major refurbishment of the existing Granary building and Eastern Goods Yard Complex located within the Kings Cross Development.

When complete, the project is intended to accommodate over 5000 students, with associated infrastructure works for use by the general public.

Services Provided Include: Biometric Access Control (S2K), Web-Based Delivery, Management (ADBM), Contractor Management Tools, Security Management, Waste Management, Traffic Management, Welfare, Fire and Logistical Support Services.



The Movement – Greenwich

Package: Scaffolding

The Movement is a highly sustainable, mixed-use scheme located on the former Greenwich Industrial Estate.

The Movement will comprise 181 residential apartments, 358 student apartments, education/administrative space and various retail and business units.

The Movement will also provide a new 30-bed boutique hotel and restaurant behind the existing North Pole public house as well as a 3-star 104-bed hotel.

Alandale are providing a complete scaffold service to the 181 residential complex, located within an extremely busy area of Greenwich and surrounded by local businesses and general public, making the scaffold installation complex, and requiring extremely close and detailed planning and management.

The unique profile of the building requires both traditional and designed scaffold to ensure a successful access strategy is achieved.



The Shard

Package: Logistics Management

Project Overview: The Shard – London Bridge Place is one of the highest profile and prestigious projects currently under construction. At 306 metres / 1000ft high, and with 72 floor levels and 15 radiator (spire) levels, the Shard, London Bridge will become the tallest building in the European Union.

The tower, once completed will consist of a mixture of Hotel, Apartments, Offices and Leisure Facilities, not to mention public galleries and high class restaurants. As of late November 2010, the Shard has passed the 235m mark, relieving One Canada Square in Canary Wharf of its 18-year reign as Britain's tallest building. Located in one of the most constrained, densely populated and congested locations in central London, Alandale have assisted in providing pre-construction traffic and logistical management planning for this extremely challenging project.

Services Provided: Web-Based Delivery Management (ADBM), Traffic Management, Traffic Management Equipment, Waste Management, Temporary Accommodation, Multi-Service and General Buildersworks



The Royal Alexandra Quarter – Brighton

Package: Scaffolding

The Royal Alexandra Quarter is a new-build development of 1, 2 & 3 bedroom apartments within 5 blocks.

Our works include the construction of independent scaffolds to each of the 5 blocks, with integral loading platforms and 'system' staircases.

The project also includes a fully encapsulated scaffold with an integrated scaffold roof to provide a watertight environment for the 'wet-trade' packages to progress successfully.

Situated very close to Brighton town centre and located within a densely occupied residential area, the scaffolding works for this development required detailed planning and careful implementation, to ensure a safe and efficient installation.

The installation was also located in close proximity to a very busy road system, making the safe execution of these works even more critical.





Alandale Logistics • Alandale Scaffolding • Alandale Building Fit-out
Alandale Logistics (Northern) • Alandale Security

Alandale Logistics Limited

9 Selsdon Way, City Harbour, London E14 9GL

Telephone: 020 7005 0050 • Facsimile: 020 7005 0051

E-mail: enquiries@alandaleuk.com • Web: www.alandaleuk.com